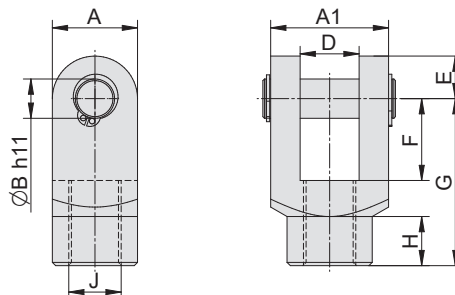


PISTON ROD CLEVIS FOR CYLINDERS
CNOMO 06.07.02

Supply contains:

- 1 pc clevis
- 1 pc pivot pin
- 2 pcs retaining rings

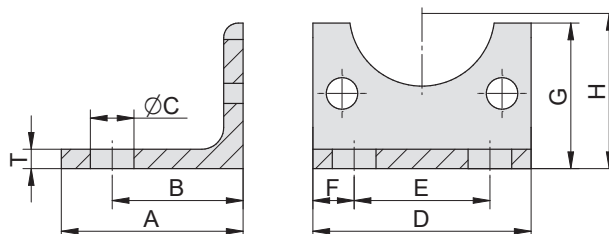


Piston \varnothing	A	A1	B	D	E	F	G	H	J	Weight	Order codes
32	22	22	8	11	9	16	36	13	M10	0.11	2114 0100 0032 0000
40 / 50	26	36	12	18	13	25	51	15	M16x1.5	0.26	2114 0100 0040 0000
63 / 80	34	45	16	22	17	33	63	18.5	M20x1.5	0.53	2114 0100 0063 0000
100 / 125	42	63	20	30	20	40	85	30	M27x2	1.13	2114 0100 0100 0000
160 / 200	60	80	25	40	25	40	115	45	M36x2	2.82	2114 0100 0160 0000

FOOT MOUNTING FOR CYLINDER
CNOMO 06.07.02

Supply contains:

- 1 pc foot mounting
- 2 pcs nuts
- 2 pcs washers

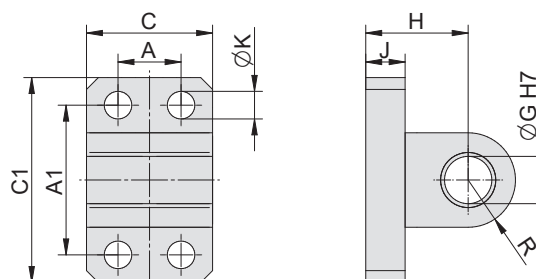
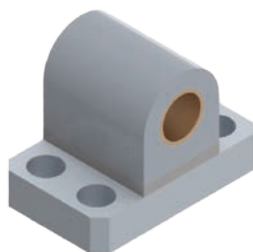


Piston \varnothing	A	B	C	D	E	F	G	H	T	Weight	Order codes
32	37.5	27	9	45	28	8.5	30	32	4	0.09	2114 2100 0032 0000
40	35	27	9	52	36	8	32	36	5	0.12	2114 2100 0040 0000
50	45	35	11	65	45	10	40	45	5	0.19	2114 2100 0050 0000
63	45	35	11	75	55	10	40	50	5	0.22	2114 2100 0063 0000
80	55.5	43	14	95	70	12.5	60	63	6	0.45	2114 2100 0080 0000
100	55	43	14	115	90	12.5	60	73	6	0.55	2114 2100 0100 0000
125	72	52	18	140	100	20	70	91	8	1.14	2114 2100 0125 0000
160	87	62	22	180	130	25	90	115	10	2.29	2114 2100 0160 0000
200	95	62	22	220	170	25	120	135	12	4.03	2114 2100 0200 0000

SWIVEL FLANGE FOR CYLINDER
CNOMO 06.07.02

Supply contains:

- 1 pc swivel flange



Piston \varnothing	A	A1	C	C1	G	H	J	K	R	Weight	Order codes
32	-	28	25	40	8	18	8	7	8	0.04	2114 3300 0032 0000
40 / 50	16	38	32	52	12	26	10	9	12	0.09	2114 3300 0040 0000
63 / 80	25	54	46	75	16	34	12	11	18	0.69	2114 3300 0063 0000
100 / 125	32	90	56	115	20	41	16	14	20	1.30	2114 3300 0100 0000
160 / 200	43	150	71	180	25	55	20	18	25	3.50	2114 3300 0160 0000