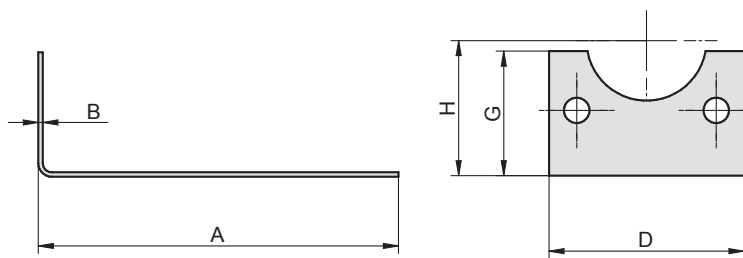


## VALVE BRACKET FOR CYLINDER

- ISO 15552, VDMA 24562, NF E 49003.1
- DIN ISO 6431, VDMA 24562, NF E 49003.1
- COMPACT

Supply contains:  
1 pc bracket  
2 pcs screws



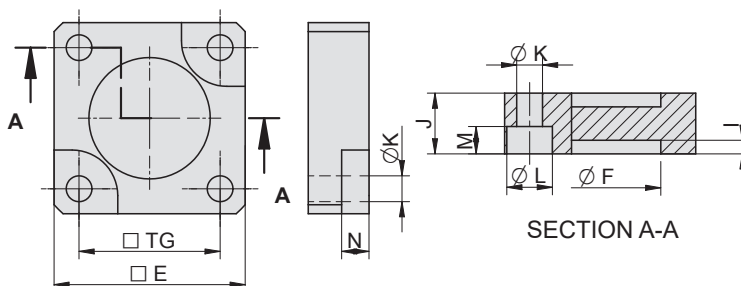
Valve bracket should be fixed on front or rear cap of cylinder. Bracket is universal, it means, that any valve can be attached on it - it is necessary to drill fixing holes in bracket according to the holes in valve. This simple but practical bracket should solve not only the problem with placing of valve in application, but it helps to better look and compact impression of application (it is not necessary to lead and fix tubes for inlet and outlet of cylinder).

Piston $\varnothing$	A	B	D	G	H	Weight	Order codes
32	160	1.5	48	30	32	0.11	2101 8000 0032 0000
40	200	1.5	55	32	36	0.15	2101 8000 0040 0000
50	230	1.5	65	41.5	45	0.20	2101 8000 0050 0000
63	230	1.5	75	41.5	50	0.24	2101 8000 0063 0000
80	230	1.5	95	60	63	0.32	2101 8000 0080 0000
100	230	1.5	115	60	71	0.30	2101 8000 0100 0000
125	250	1.5	140	70	90	0.42	2101 8000 0125 0000

## BOXER FLANGE MOUNTING FOR CYLINDER

- ISO 15552, VDMA 24562, NF E 49003.1
- DIN ISO 6431, VDMA 24562, NF E 49003.1
- COMPACT

Supply contains:  
1 pc flange  
4 pcs screws



Using the boxer flange mounting, the 2 cylinders can be mounted together by end caps, so the piston rods will move against each other. If the cylinders will have the same stroke, the final assembly will have 3 positions when cylinders will be in end positions. When the cylinders will have various strokes, the final assembly will

have 4 positions.

Attention: the body of cylinders are moving in this assembly, so it is necessary to use flexible air connections.

Piston $\varnothing$	TG	E	F	J	M	N	K	L	I	Weight	Order codes
32	32.5	45	30	15	6.5	8	6.5	11	4.5	0.052	2101 2300 0032 0000
40	38	56	35	15	6.5	8	6.5	11	4.5	0.084	2101 2300 0040 0000
50	46.5	63	40	20	9	9	8.5	15	4.5	0.154	2101 2300 0050 0000
63	56.5	75	45	20	9	9	8.5	15	4.5	0.223	2101 2300 0063 0000
80	72	95	45	25	12	12	10.5	18	4.5	0.511	2101 2300 0080 0000
100	89	115	55	25	12	12	10.5	18	4.5	0.774	2101 2300 0100 0000
125	110	140	60	30	15	13	12.5	20	6.5	1.714	2101 2300 0125 0000
160	140	185	65	35	17.5	15	16.5	26	6.5	2.945	2101 2300 0160 0000
200	175	235	75	35	17.5	15	16.5	26	6.5	4.844	2101 2300 0200 0000
250	220	270	90	45	21.5	18	21	34	10.5	8.167	2101 2300 0250 0000
320	270	350	110	50	27	20	25	40	10.5	15.47	2101 2300 0320 0000

