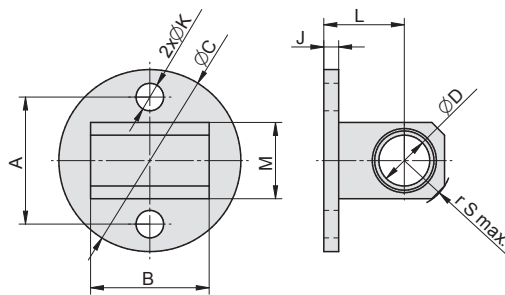
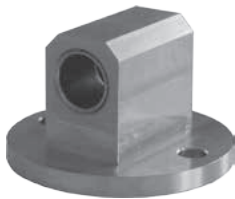


SWIVEL FLANGE

FOR ANTI-CORROSIVE - HYGIENIC CLEAN CYLINDERS

Supply contains (material):
 1 pc flange (body: AISI 304,
 bushing: Tecaform AD)
 2 pcs screws (A4)

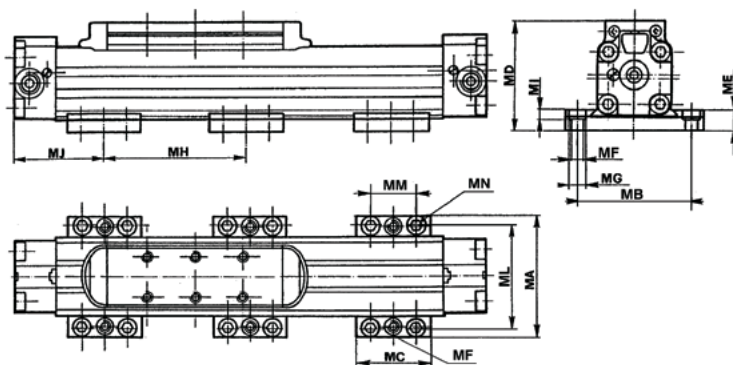


Piston Ø	A	B	C	D	J	K	L	M	r S max.	Weight	Order codes
32	25	26	34.6	10	3.5	5.5	18.5	15	10	0.076	2176 3300 0032 0000
40	30	28	43	12	3.5	6.5	19	18	12	0.10	2176 3300 0040 0000
50	39	32	53	12	5	6.5	22	20	12.5	0.18	2176 3300 0050 0000
63	49	40	64.5	16	5	8.5	26	28	18	0.35	2176 3300 0063 0000
80	64	50	84	16	8	11	30.5	32	20	0.70	2176 3300 0080 0000
100	82	60	104	18	8	11	35	35	20.5	1.05	2176 3300 0100 0000

MOUNTING PLATE FOR RODLESS CYLINDER

• SERIES S1, S5 AND VL1

Supply contains:
 1 pc flange
 2 pcs mounting plates
 4 pcs bolts to fix
 mounting plates

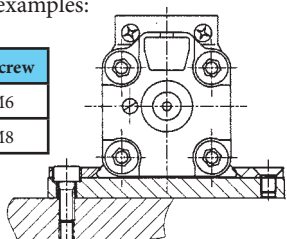


Piston Ø	MA	MB	MC	MD for series			ME	MF	MG	MH*	MI	MJ	ML	MM	MN	Weight	Order codes
				S1	S5	VL1											
25	78.5	63.5	50	65.6	79.8	82.3	12	M8	11	500*	6.5	55	65.5	30	M6	0.31	NSF-12025
32	92	77.5	50	74.2	90.5	90.5	12	M8	11	600*	5.5	60	79.5	30	M6	0.34	NSF-12032
40	117	96	60	95.8	116.6	116	15	M10	14	700*	8	70	96	37.5	M8	0.66	NSF-12040
50	136	115	60	113	133.7	136.2	15	M10	14	800*	8	70	115	37.5	M8	0.70	NSF-12050

* Maximum dimension in order to limit the deflection of the cylinder under its own weight (if exceeded, we recommend to use another flange)

Mounting examples:

Piston Ø	Screw
25, 32	M6
40, 50	M8



Piston Ø	Screw
25, 32	M8
40, 50	M10

